

# IBM Connections Docs From Zero to Hero

TI-1055



*Roberto Boccadoro – ELD Engineering*

*Senior IT Specialist / Architect*

*Martti Garden – IBM*

*WW Technical Sales Leader IBM Docs and Connections*

# Connect 2016

The Premier Social Business and Digital Experience Conference

#ibmconnect



# Please Note:



- IBM's statements regarding its plans, directions, and intent are subject to change or withdrawal without notice at IBM's sole discretion.
- Information regarding potential future products is intended to outline our general product direction and it should not be relied on in making a purchasing decision.
- The information mentioned regarding potential future products is not a commitment, promise, or legal obligation to deliver any material, code or functionality. Information about potential future products may not be incorporated into any contract.
- The development, release, and timing of any future features or functionality described for our products remains at our sole discretion.
- Performance is based on measurements and projections using standard IBM benchmarks in a controlled environment. The actual throughput or performance that any user will experience will vary depending upon many factors, including considerations such as the amount of multiprogramming in the user's job stream, the I/O configuration, the storage configuration, and the workload processed. Therefore, no assurance can be given that an individual user will achieve results similar to those stated here.



# Notices and Disclaimers



Copyright © 2015 by International Business Machines Corporation (IBM). No part of this document may be reproduced or transmitted in any form without written permission from IBM.

## **U.S. Government Users Restricted Rights - Use, duplication or disclosure restricted by GSA ADP Schedule Contract with IBM.**

Information in these presentations (including information relating to products that have not yet been announced by IBM) has been reviewed for accuracy as of the date of initial publication and could include unintentional technical or typographical errors. IBM shall have no responsibility to update this information. THIS DOCUMENT IS DISTRIBUTED "AS IS" WITHOUT ANY WARRANTY, EITHER EXPRESS OR IMPLIED. IN NO EVENT SHALL IBM BE LIABLE FOR ANY DAMAGE ARISING FROM THE USE OF THIS INFORMATION, INCLUDING BUT NOT LIMITED TO, LOSS OF DATA, BUSINESS INTERRUPTION, LOSS OF PROFIT OR LOSS OF OPPORTUNITY. IBM products and services are warranted according to the terms and conditions of the agreements under which they are provided.

## **Any statements regarding IBM's future direction, intent or product plans are subject to change or withdrawal without notice.**

Performance data contained herein was generally obtained in a controlled, isolated environments. Customer examples are presented as illustrations of how those customers have used IBM products and the results they may have achieved. Actual performance, cost, savings or other results in other operating environments may vary.

References in this document to IBM products, programs, or services does not imply that IBM intends to make such products, programs or services available in all countries in which IBM operates or does business.

Workshops, sessions and associated materials may have been prepared by independent session speakers, and do not necessarily reflect the views of IBM. All materials and discussions are provided for informational purposes only, and are neither intended to, nor shall constitute legal or other guidance or advice to any individual participant or their specific situation.

It is the customer's responsibility to insure its own compliance with legal requirements and to obtain advice of competent legal counsel as to the identification and interpretation of any relevant laws and regulatory requirements that may affect the customer's business and any actions the customer may need to take to comply with such laws. IBM does not provide legal advice or represent or warrant that its services or products will ensure that the customer is in compliance with any law



# Notices and Disclaimers cont.



Information concerning non-IBM products was obtained from the suppliers of those products, their published announcements or other publicly available sources. IBM has not tested those products in connection with this publication and cannot confirm the accuracy of performance, compatibility or any other claims related to non-IBM products. Questions on the capabilities of non-IBM products should be addressed to the suppliers of those products. IBM does not warrant the quality of any third-party products, or the ability of any such third-party products to interoperate with IBM's products. IBM EXPRESSLY DISCLAIMS ALL WARRANTIES, EXPRESSED OR IMPLIED, INCLUDING BUT NOT LIMITED TO, THE IMPLIED WARRANTIES OF MERCHANTABILITY AND FITNESS FOR A PARTICULAR PURPOSE.


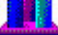
The provision of the information contained herein is not intended to, and does not, grant any right or license under any IBM patents, copyrights, trademarks or other intellectual property right.

• IBM, the IBM logo, ibm.com, Aspera®, Bluemix, Blueworks Live, CICS, Clearcase, Cognos®, DOORS®, Emptoris®, Enterprise Document Management System™, FASP®, FileNet®, Global Business Services®, Global Technology Services®, IBM ExperienceOne™, IBM SmartCloud®, IBM Social Business®, Information on Demand, ILOG, Maximo®, MQIntegrator®, MQSeries®, Netcool®, OMEGAMON, OpenPower, PureAnalytics™, PureApplication®, pureCluster™, PureCoverage®, PureData®, PureExperience®, PureFlex®, pureQuery®, pureScale®, PureSystems®, QRadar®, Rational®, Rhapsody®, Smarter Commerce®, SoDA, SPSS, Sterling Commerce®, StoredIQ, Tealeaf®, Tivoli®, Trusteer®, Unica®, urban{code}®, Watson, WebSphere®, Worklight®, X-Force® and System z® Z/OS, are trademarks of International Business Machines Corporation, registered in many jurisdictions worldwide. Other product and service names might be trademarks of IBM or other companies. A current list of IBM trademarks is available on the Web at "Copyright and trademark information" at: [www.ibm.com/legal/copytrade.shtml](http://www.ibm.com/legal/copytrade.shtml).



# About me




Joined Lotus in 1994, we were selling  then, Notes was V3  and was sold as development platform. Remained in IBM since Sept. 2012 in Technical Sales. During those years I have worked with almost all the products Lotus/IBM has created in the collaboration space. I am now a consultant IT Specialist/IT Architect and my actual focus is mostly IBM Connections, IBM Docs, IBM Sametime, Quickr migration to Connections.

I have 9 IBM Technical certifications and I am an



Outside work, I am a husband and father of 4 (2 humans, 2 cats) and an amateur astronomer.

 @robboc59

 blog <http://rob59blog.wordpress.com/>

 roberto.boccardo@eldeng.it



# About me



Joined IBM in 1997 as a student and was happy to see the introduction of Lotus Notes 4.5 in 1998. Since 2000 I am working as a Technical Sales with side steps into Sales and Services. Now I am part of the WW Technical Sales Team responsible for IBM Docs and IBM Connections.

I have worked with mobile solutions from IBM (IBM Mobile Connect, WebSphere Everyplace Access, WebSphere Everyplace Server, WebSphere Everyplace Connection Manager) and the Lotus portfolio with strong focus on Social Solutions (IBM Connections, IBM Docs and IBM Verse).



@mgarden



blog <http://ibmdocs.com/>



Martti.garden@de.ibm.com



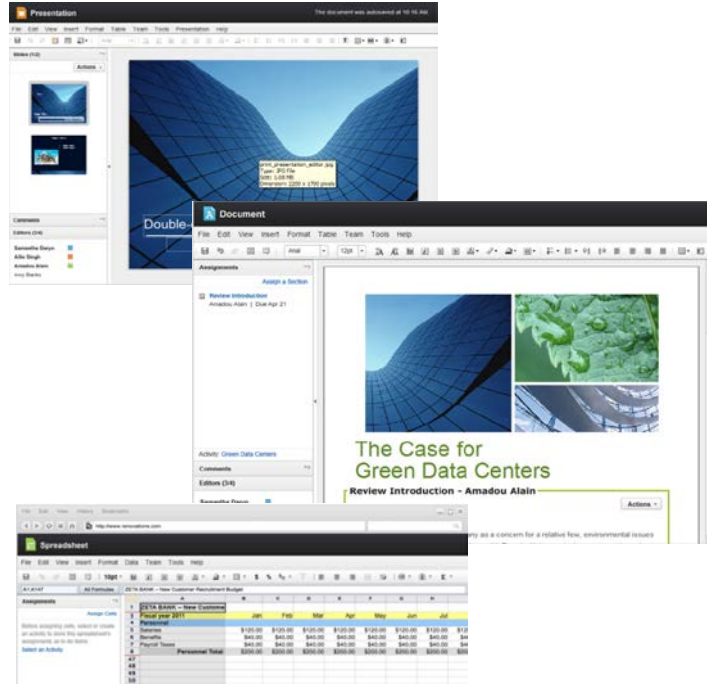
**ICON UK**  
the IBM user group



# What is IBM Connections Docs ?



Web-based collaborative editors for creating, sharing and collaboratively authoring word processor documents, spreadsheets and presentations.



With IBM Docs, teams can simultaneously collaborate on word processing, spreadsheet and presentation documents inside and outside the firewall to improve productivity.

IBM Docs authors will be able to store and share documents in IBM Connections Cloud, IBM Connections on premise or FileNet (or any 3<sup>rd</sup> party ECM system), co-edit documents in real time or edit the most up-to-date version on the server regardless if the editing session is concurrent, asynchronous or individual... This greatly decreases the management of multiple revisions from multiple authors in team-based documents.

IBM Docs requires only a browser. There is no other desktop software to install. Utilizing the web browser, users will be able to easily create professional looking documents and share them with others. IBM Docs is designed to be simple yet powerful, allowing users to get started quickly and easily.



# IBM Connections Docs components

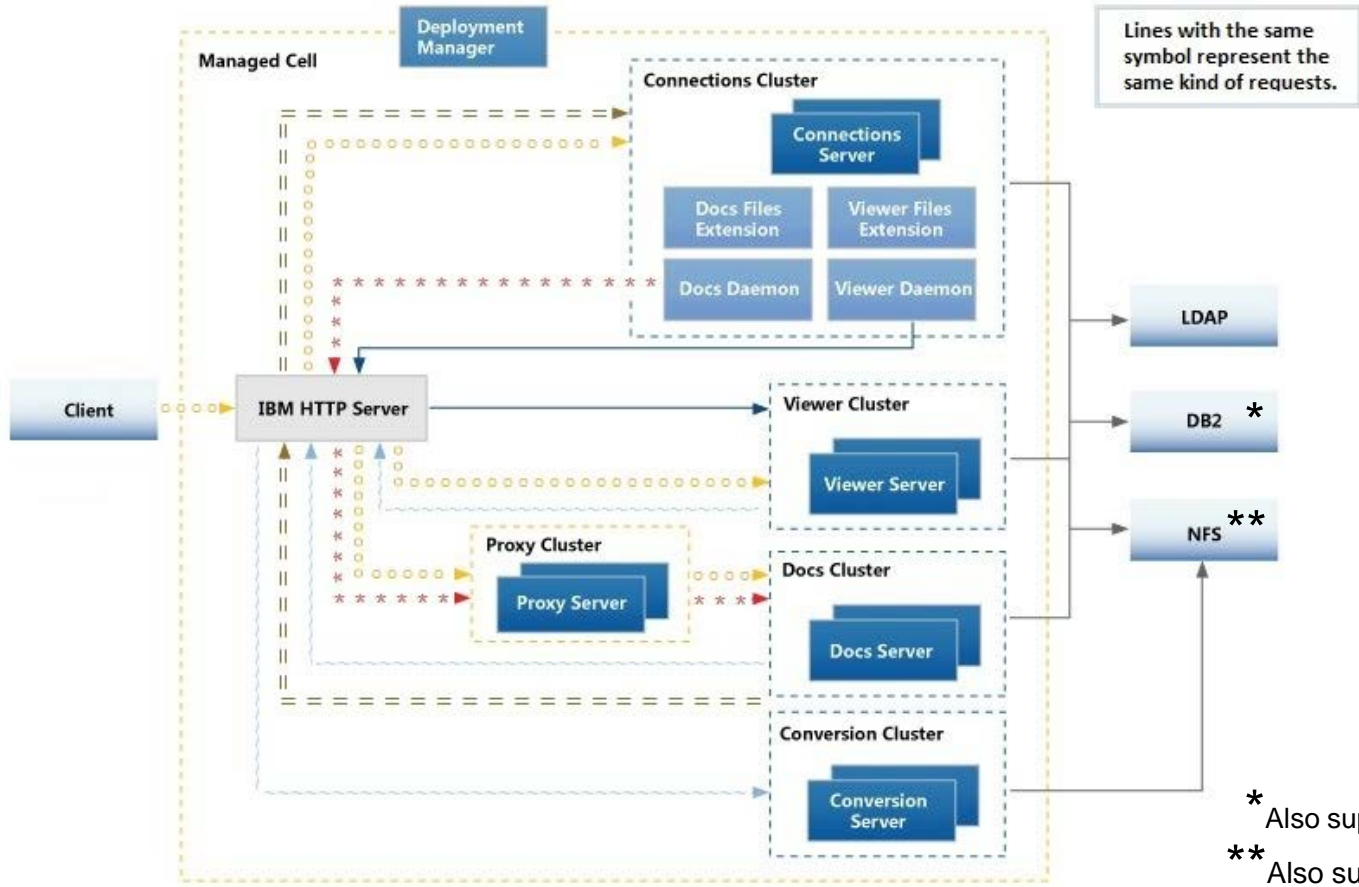


- An IBM Connections Docs deployment consists of six components:
- **Docs Editing server** (document service)  
This component provides the core logic for processing of the documents.
- **Document Format Conversion server** (conversion service)  
This component performs document type transformations.
- **Docs extension plug-in and daemon library**  
These components are the integration elements which enable IBM Connections users to open and edit a document within the Connections Docs context.
- **File Viewer server** (viewer service)  
The viewer service enables viewing of the latest published version of a document.
- **File Viewer extension plug-in and daemon library**  
These components are the integration element which enable Connections users to view a document within the Connections Docs context.
- **Docs proxy**  
The proxy is used for session affinity in Connections Docs. Session affinity routes requests for the same document from different clients to the same Docs server node.





# Architecture (medium to large)





# Shared storage

- Connections Docs shared storage is used by each of the Connections Docs components to store drafts or transfer files between servers. There are three shares that need to be configured for Connections Docs.
- The Connections Docs and Conversion components share storage for the editing and publishing of documents. This shared storage is supported for either NFSv3 or CIFS (SMB). This share is referred to as **DOCS DATA**.
- The File Viewer and Conversion components share storage for the viewing of documents. If File Viewer and Conversion are installed on the same server, this storage can be local. If they are installed on different servers, this shared storage is supported for either NFSv3 or CIFS (SMB). This share is referred to as **VIEWER DATA**.
- The File Viewer and Connections Files components share storage for the viewing of documents. If File Viewer and Connections Files are installed on the same server, this storage can be local. If they are installed on different servers, this shared storage is supported for either NFS or CIFS (SMB). This share is referred to as the **Connections Files Content Store**.



# Installation pre-requisites



- Install Python 2.7.x
- Disable UAC on the Windows server



# Live Installation



- Two servers on Softlayer
- Connections 5.5 on Linux
- Docs will be installed on Windows 2012 machine



# Additional Information



- You can find an presentation on how to install IBM Docs 2.0 [here](#)



# Other sessions on IBM Docs



- AD 1212 : Integrate IBM Docs with ANY document repository –  
Michael Roche, Yuan Cheng  
Feb 2 - 02:30 PM - 03:30 PM - Hilton Orlando, Orange G
- SI 1148 : IBM Connections Docs ,Collaborative Editing Solution  
for Business – Lisa Li, Jim Puckett  
Feb 3 - 12:45 PM - 01:45 PM - Hilton Orlando, Florida 5





Thank you

# Connect 2016

The Premier Social Business and Digital Experience Conference

#ibmconnect

